

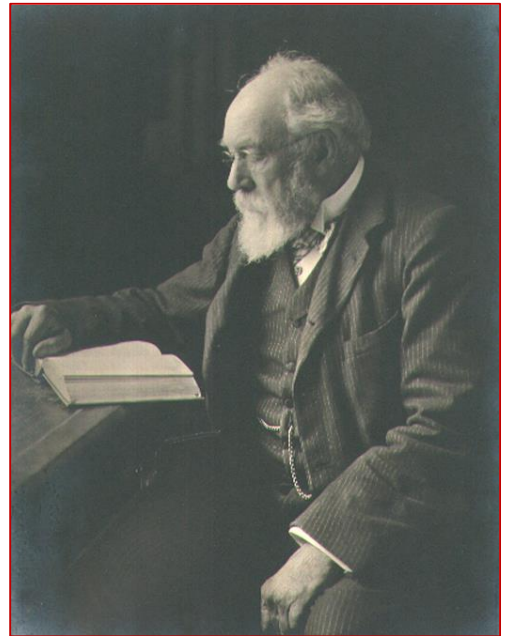
Orpington's Forgotten Man: George Allen of Sunnyside

An Exhibition at Bromley Museum, The Priory, Church Hill, Orpington
May 19th – July 19th 2014

Although George Allen (1832 - 1907) was one of Orpington's earliest and most successful residents, he is not a familiar name to many of the local residents. He was an accomplished artist, engraver and mineralogist, but it was his publishing business that brought the town's name into world-wide prominence, with the renowned address:

George Allen, Sunnyside, Orpington, Kent.

Most of his life was spent with the great Victorian writer John Ruskin (1819-1900), with whom he worked, travelled and published, beginning with their meeting in 1854 at the London Working Men's College and lasting until Ruskin's death in 1900. Allen moved to Orpington in 1874 when he purchased a strip of land in Tubbenden Lane and built 'Sunnyside,' a large Victorian villa where he and his family settled. The house was not only a repository for Ruskin's printed books, from where they were sent out into the world, but it also had a purpose-built engraving studio where he carried out some of his finest and most detailed work. He was in earlier years associated with the Pre-Raphaelite painter Dante Gabriel Rossetti and founder of the Arts & Crafts movement, William Morris. Along with Sir John Lubbock and Charles Darwin, George Allen was a significant figure in Orpington's History.



This exhibition is presented by the Orpington History Organisation, and showcases some of Allen's finest engravings, books and bindings from a private collection, and rare images of Sunnyside in its heyday. Many photographs of old Orpington will be on display, particularly those with a connection to George Allen's time in the town.



Bromley Museum is open Monday to Friday from 10.00 - 12.30 and 1.30 - 5.00,
and on the first and third Saturday of each month.

Entry to the museum is free



Orpington-History.org